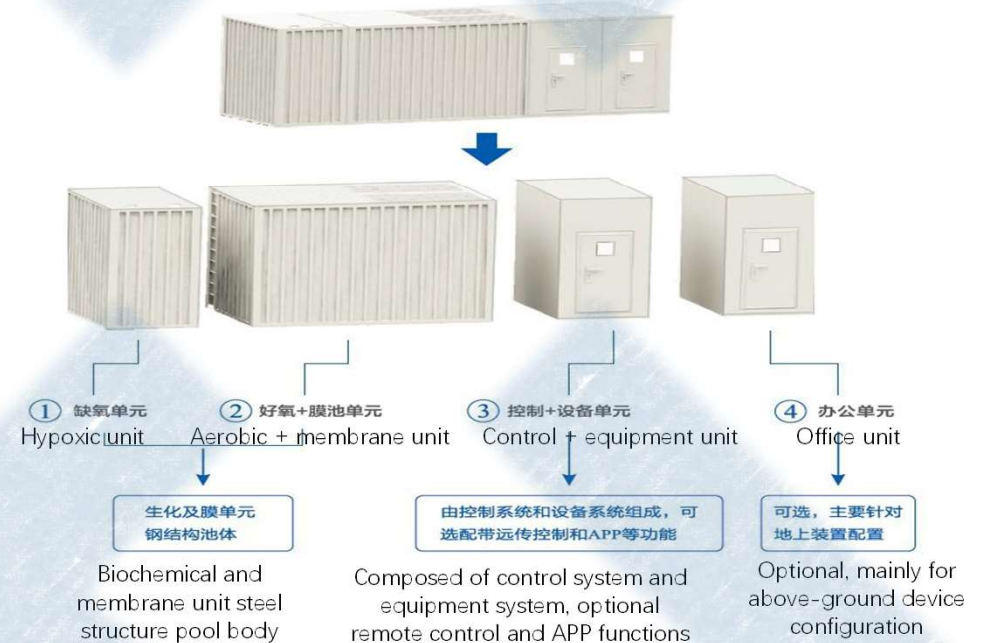


Conexxion Compact Water Treatment System

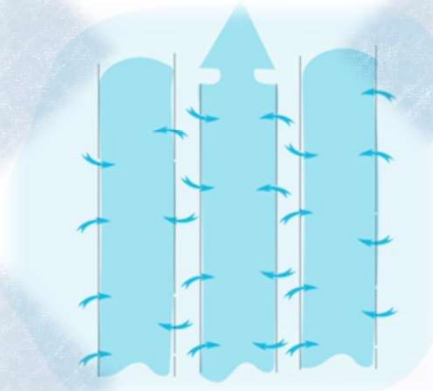
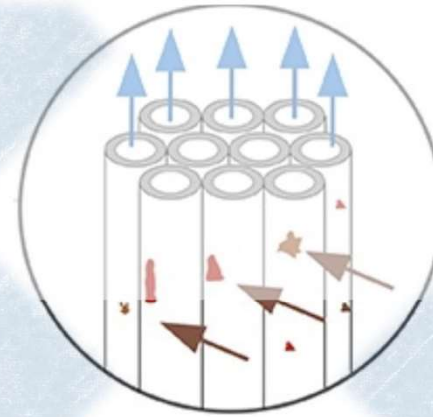
The Compact Water Treatment (CWT) System Adopts A Modular Design And Comprises Four Basic Modular Units, As Shown In The Diagram Below. According To The Sewage Purification Requirements And The Actual Situation Of The Site, The Basic Modular Units Can Be Combined Arbitrarily, And The Installation Method Can Be Above-ground Or Underground.

- 1. Good Water Quality: The High-efficiency Biotechnology Is Organically Combined With The Patented Mbr Membrane Module Technology, Which Has Strong Impact Resistance And A Wide Range Of Applications. The Effluent Quality Can Reach Class Iv On The Surface.
- 2. Energy Efficient: The Application Of Variable High And Low Aeration And Three-point Water Collection Technology Can Reduce Energy Consumption By More Than 30%.
- 3. Durable: Modular Assembly Of Units On Site, Controllable Quality, Convenient Transportation And Relocation With A Long Service Life.
- 4. Smart Management: App Intelligent Control And Remote Monitoring Allowing The Modules To Be Unattended, Resulting In Low Maintenance Cost.
- 5. Full Customization: The Equipment Can Be Fully Buried, Semi-buried, Or Above The Surface. The Setup Can Be Arranged In A Non-standard Format, And Can Be Set Up According To The Needs Of The Terrain.
- 6. Save Space: Equipment Can Be Buried To Save Surface Space. The Unused Above-ground Space Can Be Used As Green Space, Sidewalks, Etc., Without Any Negative Impact On Operations.

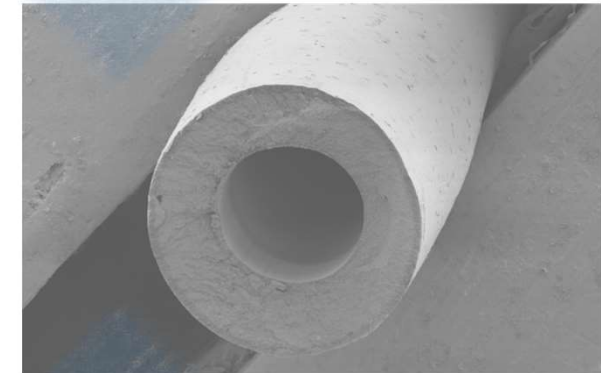
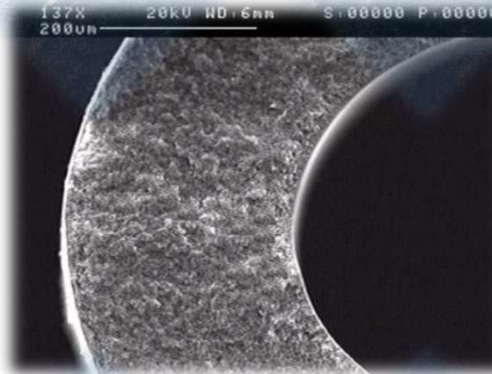
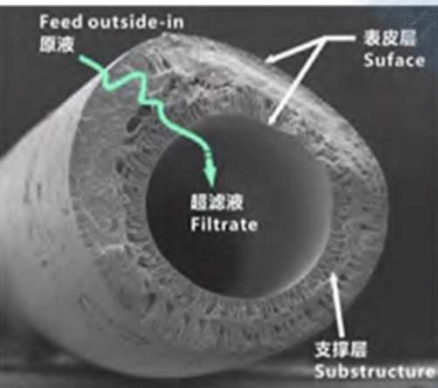


How the Technology Works

- Water To Be Treated Is Passed Through Various Stages Of Hollow Fiber Ultra/Microfiltration Membrane Units
- The Membranes Consist Of High-quality Polyvinylidene Fluoride (Pvdf) Material Ultra/Microfiltration Wire Membranes Bundled Together In A Filter Canister
- Tremendous Resistance To Harsh Halogenated Chemicals (Chlorine, Naocl Bleach, Chlorine Dioxide, Chloramines) And Acids, Peroxides, Aromatics, Ozone And Other Oxidants
- Improved Toughness And Ductility
- Less Cracking/Breaking During Turbulent Water Flow (Both Outside-in And Inside-out/Backflush Flow Conditions) And Air-scouring Operations
 - The Result Is A Membrane That Is More Durable, Requires Less Maintenance (Less Down-time) And Is Tougher Than Psu And Pesu Alternatives.
- Permanent Hydrophilization (Water Attraction), High Flux:
 - High Water Flux, Up To 20~ 30 L/M2·h。
 - Pvdf Has A Small Contact Angle, Good Hydrophilicity And No Degradation.
- Membranes Can Be Restored And Renewed By Backwashing
- Waste Membrane Filaments Can Be Recycled, Reducing Environmental Pollution And Reducing Maintenance Costs



Performance Parameters



Membrane Material	PVDF
Hollow Fiber Membrane	1.3mm
Hollow Fiber Membrane Inner Warp	0.7mm
Average Pore Size of Membrane	0.02 μ m
Pure Water Flux	400L/m ² .h
Membrane Wire Strength	\geq 6N
Maximum Working Pressure	\leq 300kPa

Water Quality Index	Water Intake (mg/L)	Water Output (mg/L)
CODcr	250-400	\leq 60
BOD5	100-220	\leq 20
NH3-N	50	\leq 15
SS	200-400	\leq 30

Types Of Systems and Applications

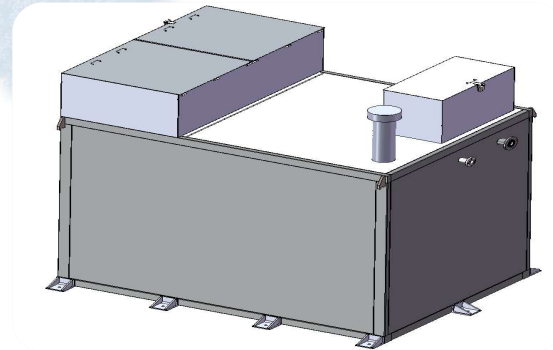
<u>CWT-A</u>						
Container Size	Footprint			Processing Scale	Installed Power	Operational Energy Consumption
ft	Length	Width	Height	t/day	kW	kWh/t
10	2991	2438	2896	35	3.2	2.09
20	6058	2438	2896	75	5.2	1.43
40	12192	2438	2896	200	8.88	1.07
<u>CWT-B</u>						
Container Size	Footprint			Processing Scale	Installed Power	Operational Energy Consumption
ft	Length	Width	Height	t/day	kW	kWh/t
10	2991	2438	2896	80	4.08	0.98
20	6058	2438	2896	200	8.06	0.97
40	12192	2438	2896	400	10.85	0.66

CWT-A Application Scope :

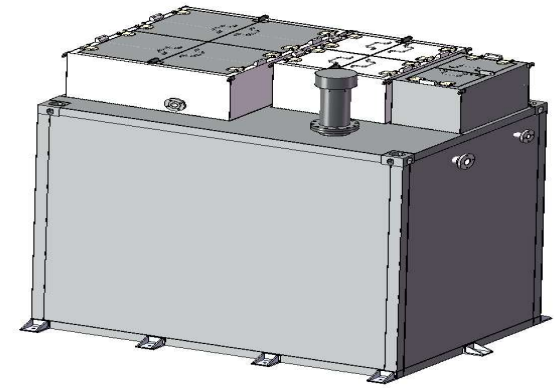
- Water Source Protection Areas And Environmentally Sensitive Areas;
- New Rural Water Environment Management, Farms, Tourist Spots, Ecological Parks, Residential Districts, Office Buildings, Hotels, Parks And Scenic Spots; Treatment And Reuse Of Other Scattered Point-source Domestic Sewage.

CWT-B Application Fields:

- Transitional Sewage Treatment, Or Accident Treatment Of Urban-rural Junctions And Sewage Outlets That Do Not Have Pipeline Networks For The Time Being; Sudden Emergency Sewage Treatment, Such As Overflow Sewage, Black And Odorous Water, And Fast Remediation; Important Sewage Treatment, Tourist Villages, Natural Scenic Spots, Etc. Temporary Sewage Treatment, Such As Construction Sites, Which Have A Relatively Short Service Life.

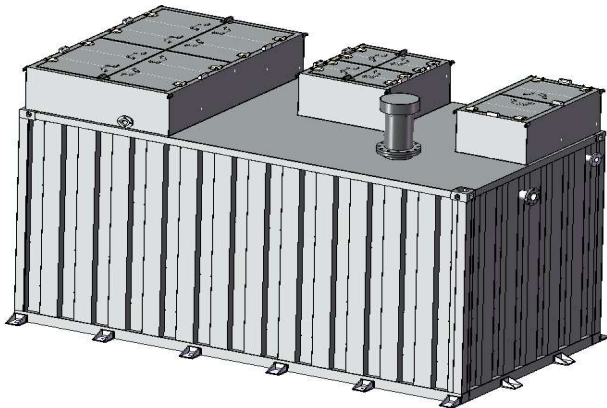


Underground 30 tonne

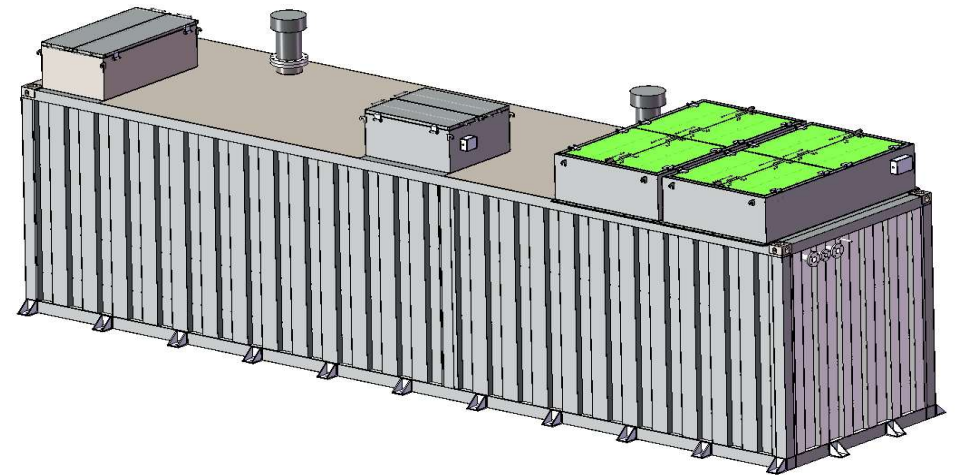


Underground 50 tonne

Underground Systems

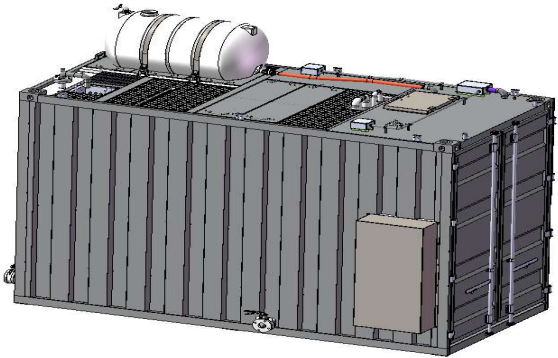


Underground 100 tonne

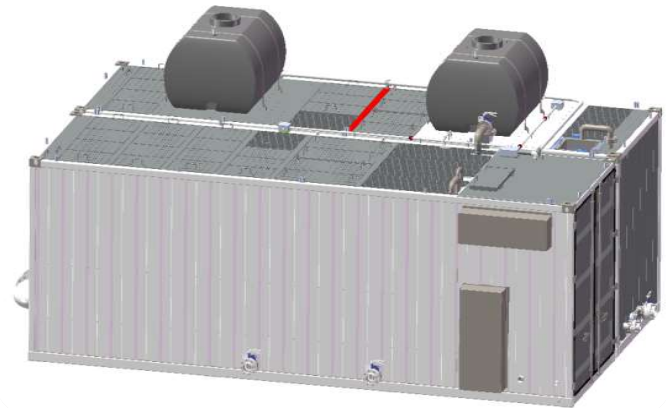


Underground 200 tonne

- Confidential -

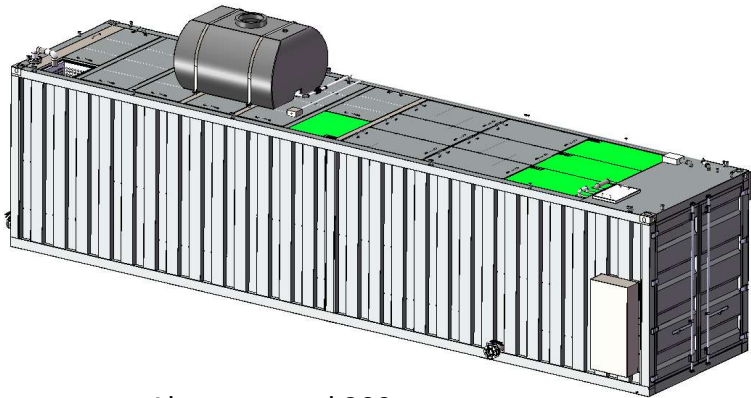


Above ground 100 tonne



Above ground 300 tonne

Above Ground Systems



Above ground 200 tonne



Above ground 500 tonne

- Confidential -



Completed Systems

